

TF20A096 RE / 02.2012

DE**Bedienungsanleitung**

Sicherungs-Handsender HSS 4 BiSecur

EN**Operating instructions**

Security hand transmitter HSS 4 BiSecur

FR**Instructions d'utilisation**

Emetteur de sécurité HSS 4 BiSecur

NL**Bedieningshandleiding**

Veiligheidshandzender HSS 4 BiSecur

IT**Istruzioni d'uso**

Telecomando di sicurezza HSS 4 BiSecur

ES**Instrucciones de servicio**

Emisor manual de seguridad HSS 4 BiSecur

PT**Instruções de funcionamento**

Telecomando de segurança HSS 4 BiSecur

Contents

1	About these instructions	6
2	Safety instructions	6
2.1	Intended use.....	6
2.2	Safety instructions for operating the security hand transmitter.....	6
3	Scope of delivery	7
4	Description of the security hand transmitter HSS 4 BiSecur	7
5	Initial start-up	7
5.1	Inserting the battery.....	7
6	Operation	7
7	Inheriting / transmitting a radio code	7
8	Reset	8
9	LED display	8
10	Cleaning	8
11	Disposal	8
12	Technical data	8

Dear Customer,

We thank you for choosing a quality product from our company.

1 About these instructions

Read through all of the instructions carefully, as they contain important information about the product. Pay attention to and follow the instructions provided, particularly the safety instructions and warnings.

Please keep these instructions in a safe place and make sure that they are available to all users at all times.

2 Safety instructions

2.1 Intended use

The security hand transmitter HSS 4 BiSecur is a unidirectional transmitter for operators and their accessories. It is operated via the BiSecur radio.

Other types of application are prohibited. The manufacturer is not liable for damage caused by improper use or incorrect operation.

2.2 Safety instructions for operating the security hand transmitter

WARNING

Danger of injury during door travel

Persons may be injured by door travel if the hand transmitter is actuated.

- ▶ Make sure that the hand transmitters are kept away from children and can only be used by people who have been instructed on how the remote-control door functions!
- ▶ If the door has only one safety device, only operate the hand transmitter if you are within sight of the door!
- ▶ Only drive or pass through remote control door systems if the door is in the Open end-of-travel position!
- ▶ Never stand in the door's area of travel.
- ▶ Please note that unwanted door travel may occur if a hand transmitter button is accidentally pressed (e.g. if stored in a pocket / handbag).

CAUTION

Danger of injuries due to unintended door travel

- ▶ See warning in section 7

ATTENTION**Malfunction due to environmental influences**

Non-compliance with these instructions can impair function!

Protect the hand transmitter from the following conditions:

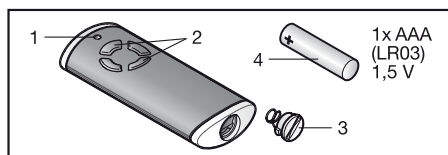
- Direct sunlight (permissible ambient temperature: -20°C to +60°C)
- Moisture
- Dust

NOTES:

- If there is no separate garage entrance, perform all programming changes and extensions of radio systems from inside the garage.
- After programming or extending the radio system, perform a function test.
- Only use original components when putting the radio system into service or extending it.
- Local conditions may affect the range of the radio system.
- When used at the same time, GSM 900 mobile phones can affect the range.

3 Scope of delivery

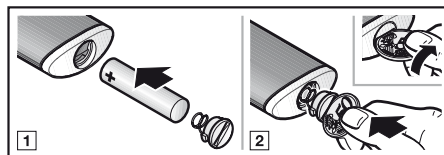
- Security hand transmitter HSS 4 BiSecur
- 1x1.5 V battery, type: AAA (LR03)
- Battery lid
- Operating instructions

4 Description of the security hand transmitter HSS 4 BiSecur

- 1 LED, bi-colour
- 2 Hand transmitter buttons
- 3 Battery lid
- 4 Battery

5 Initial start-up

After inserting the battery, the security hand transmitter HSS 4 BiSecur is ready for operation.

5.1 Inserting the battery**ATTENTION****Destruction of the hand transmitter by leaking batteries**

Batteries can leak and destroy the hand transmitter.

- ▶ Remove the battery from the hand transmitter if it is out of use for a long period of time.

6 Operation

Each hand transmitter button is assigned to a radio code. Press the button of the hand transmitter whose radio code you want to transmit.

- The radio code is transmitted and the LED is illuminated blue for 2 seconds.

NOTE:

If the battery is almost empty, the LED flashes red twice

- a. before transmitting the radio code.
 - ▶ The battery **should be** replaced soon.
- b. and the radio code is not transmitted.
 - ▶ The battery **must be** replaced immediately.

7 Inheriting / transmitting a radio code**CAUTION****Danger of injuries due to unintended door travel**

Unintended door travel may occur while teaching in the radio system.

- ▶ Make sure no persons or objects are in the door's area of travel when teaching in the radio code.

NOTE:

Radio codes can only be inherited from the security hand transmitter.

Radio codes from other hand transmitters cannot be taught in on this hand transmitter.

1. Press the button of the hand transmitter whose radio code you want to inherit / transmit and keep it pressed.
 - The radio code is transmitted and the LED is illuminated blue for 2 seconds then goes out.

- After 5 seconds, the LED alternates flashing in red and blue; the radio code is transmitted.
2. If the radio code is transmitted and recognised, release the hand transmitter button.
 - The LED goes out.

NOTE:

You have 15 seconds to inherit / transmit the code. The process must be repeated if the radio code is not successfully inherited / transmitted within this time.

8 Reset

Each hand transmitter button is assigned to a new radio code in the following steps.

1. Open the battery lid and remove the battery for 10 seconds.
2. Press a hand transmitter button and keep it pressed.
3. Insert the battery and close the battery lid.
 - The LED slowly flashes in blue for 4 seconds.
 - The LED flashes rapidly in blue for 2 seconds.
 - The LED is illuminated blue for a long time.
4. Release the hand transmitter button.

All radio codes are newly assigned.

NOTE:

If the hand transmitter button is released prematurely, no new radio codes are assigned.

9 LED display**Blue (BU)**

Condition	Function
Illuminated for 2 seconds	A radio code is being transmitted
Flashes slowly for 4 seconds Flashes quickly for 2 seconds Illuminated long	Device reset is being performed or completed

Red (RD)

Condition	Function
Flashes 2x	The battery is almost empty

Blue (BU) and Red (RD)

Condition	Function
Flashing alternately	Hand transmitter is in inherit / transmit mode

10 Cleaning**ATTENTION****Damaging the hand transmitter by faulty cleaning**

Cleaning the hand transmitter with unsuitable cleaning agents can damage the hand transmitter housing as well as the hand transmitter buttons.

- ▶ Clean the hand transmitter with a clean, soft, damp cloth.

11 Disposal

Electrical and electronic devices, as well as batteries, may not be disposed of in household rubbish. They must be returned to the appropriate recycling facilities.

12 Technical data

Type	Security hand transmitter HSS 4 BiSecur
Frequency	868 MHz
Power supply	1x1.5 V battery, type: AAA (LR03)
Perm. ambient temperature	-20°C to +60°C
Protection category	IP 20